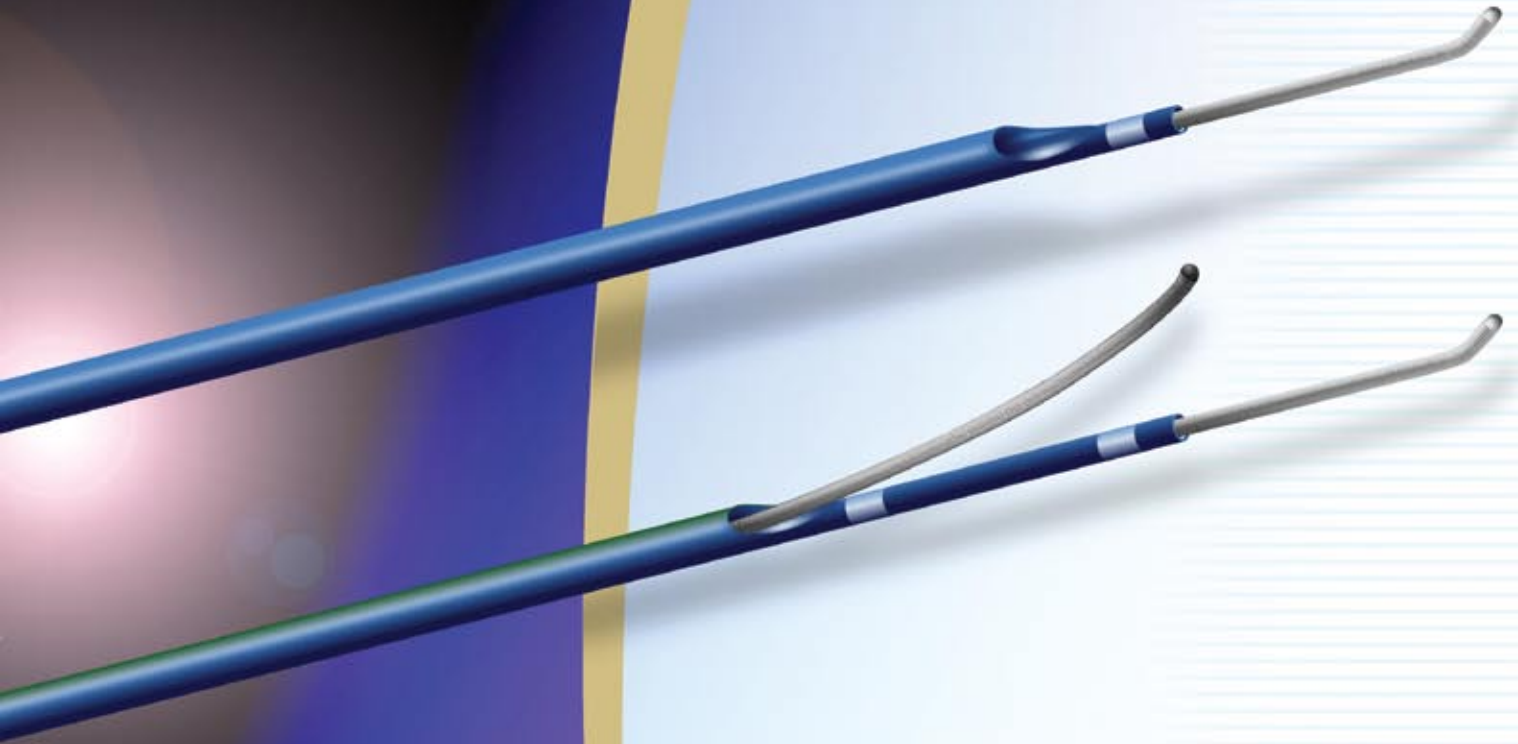
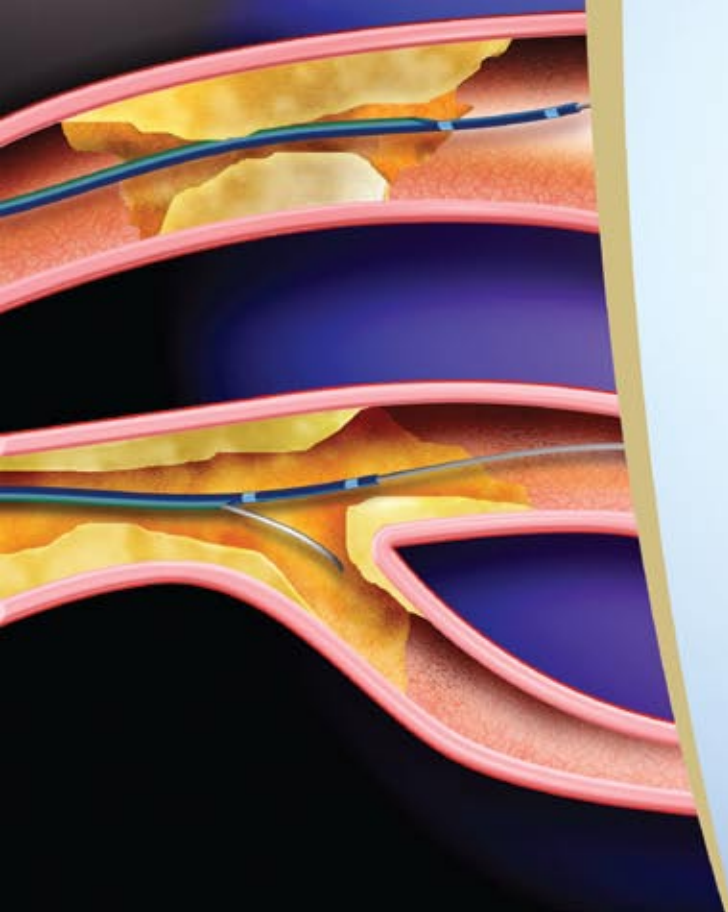


Twin-Pass[®]

Dual Access Catheter



*Two Lumens for
Distal Access with
Rapid Exchange
Convenience*



vascular
SOLUTIONS

A second lumen ...

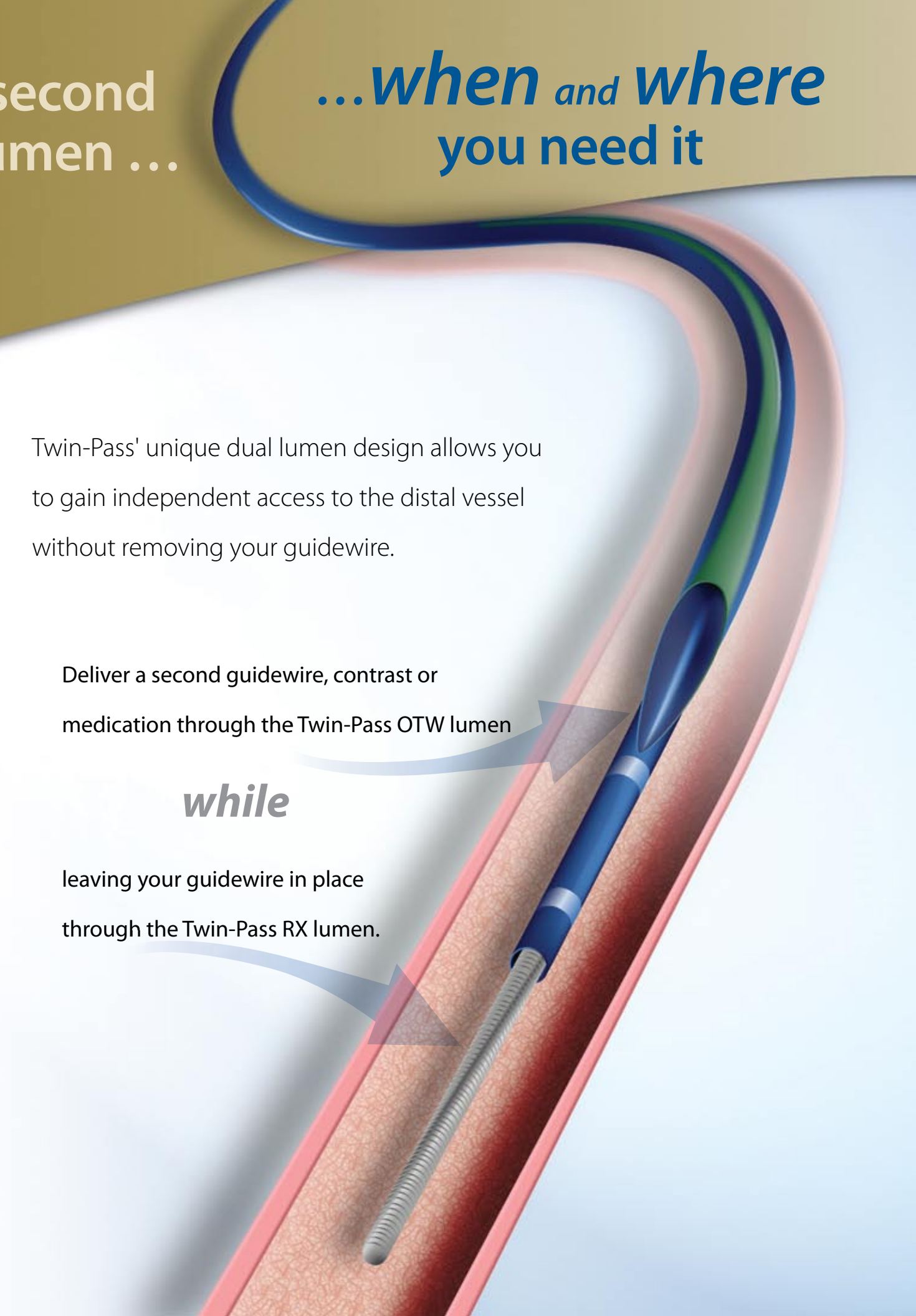
...*when* and *where* you need it

Twin-Pass' unique dual lumen design allows you to gain independent access to the distal vessel without removing your guidewire.

Deliver a second guidewire, contrast or medication through the Twin-Pass OTW lumen

while

leaving your guidewire in place through the Twin-Pass RX lumen.



Two versions of the Twin-Pass



0.014"
OTW Lumen

Lowest profile
two lumen
catheter

Twin-Pass

Model 5200—0.014" OTW Lumen

- Deliver 0.014" guidewires, contrast or medication through OTW lumen
- Low 3F crossing profile with hydrophilic coating
- Two distal radiopaque markers 1cm apart



0.023"
OTW Lumen

For 0.018"
guidewire delivery
and pressure
measurement

Twin-Pass .023"

Model 5231—0.023" OTW Lumen

- Accurate distal pressure measurement through OTW lumen
- Deliver 0.018" guidewires, contrast or medication through OTW lumen
- 3.5F crossing profile with single distal radiopaque marker

Twin-Pass®

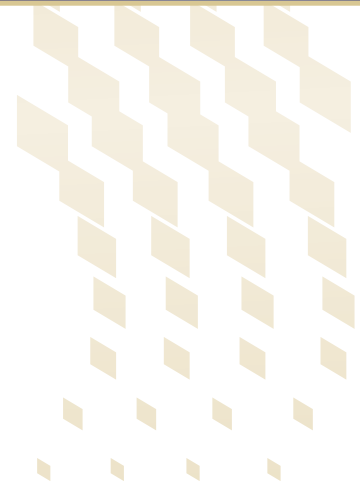
Dual Access Catheter

Model	Description	Quantity
5200	Twin-Pass Dual Access Catheter	1
5231	Twin-Pass .023" Dual Access Catheter	1

<i>Twin-Pass Specifications</i>	Twin-Pass Model 5200	Twin-Pass .023" Model 5231
Guide catheter compatibility:	≥5F (0.058" min. I.D.)	≥6F (0.066" min. I.D.)
RX guidewire compatibility:	≤0.014"	≤0.014"
OTW guidewire compatibility:	≤0.014"	≤0.018"
Distal tip profile:	1.9F x 1cm	1.9F x 2mm
Crossing profile:	3F	3.5F
Overall length:	140cm	140cm
OTW lumen exit:	Approximately 1cm from tip	Approximately 2mm from tip
RX lumen length:	21cm	20cm
Hydrophilic coating:	Yes (distal portion)	No
Positioning marks:	95cm = single white mark	95cm = single white mark
	105cm = double white marks	105cm = double white marks
Distal radiopaque marker:	1mm from tip	1mm from tip
Proximal radiopaque marker:	11mm from tip	N/A

The TWIN-PASS catheters are intended to be used in conjunction with steerable guidewires in order to access discrete regions of the coronary and peripheral arterial vasculature, to facilitate placement and exchange of guidewires and other interventional devices, for use during two guidewire procedures and to subselectively infuse/deliver diagnostic or therapeutic agents.

The TWIN-PASS .023" catheter (Model 5231) is also intended to be used to measure intra-arterial pressure within the peripheral vasculature.



Please see the Twin-Pass Instructions for Use for a complete listing of the indications, contraindications, warnings and precautions.
 U.S.A. CAUTION: Federal Law (U.S.A.) restricts this device to sale by or on the order of a physician.
 CAUTION: The Twin-Pass dual access catheter procedure should be performed by physicians with adequate training in the use of the device.
 U.S. and International patents pending.
 Twin-Pass is a registered trademark of Vascular Solutions, Inc.
 ©2009 Vascular Solutions, Inc. All rights reserved.
 ML2072 Rev. B 07/09 Canada Only

Not for U.S. distribution.



Vascular Solutions, Inc.
 6464 Sycamore Court
 Minneapolis, Minnesota 55369 USA
 USA Customer Service: 888.240.6001
www.vascularsolutions.com