



Minnie[®]

Support Catheter

*Wire support and exchange
for complex interventions*

- Tapered distal tip and low crossing profile for navigating small vessels and crossing tight lesions
- Embedded radiopaque markers for confirming position and assessing lesion length
- Hydrophilic coating for smooth delivery
- Single-layer polymer design for increased flexibility and exceptional trackability



vascular
SOLUTIONS

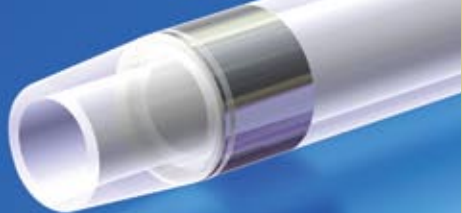
Minnie[®]

Support Catheter

Minnie catheters offer

- Available in multiple lengths with versions for 0.014", 0.018" and 0.035" guidewires

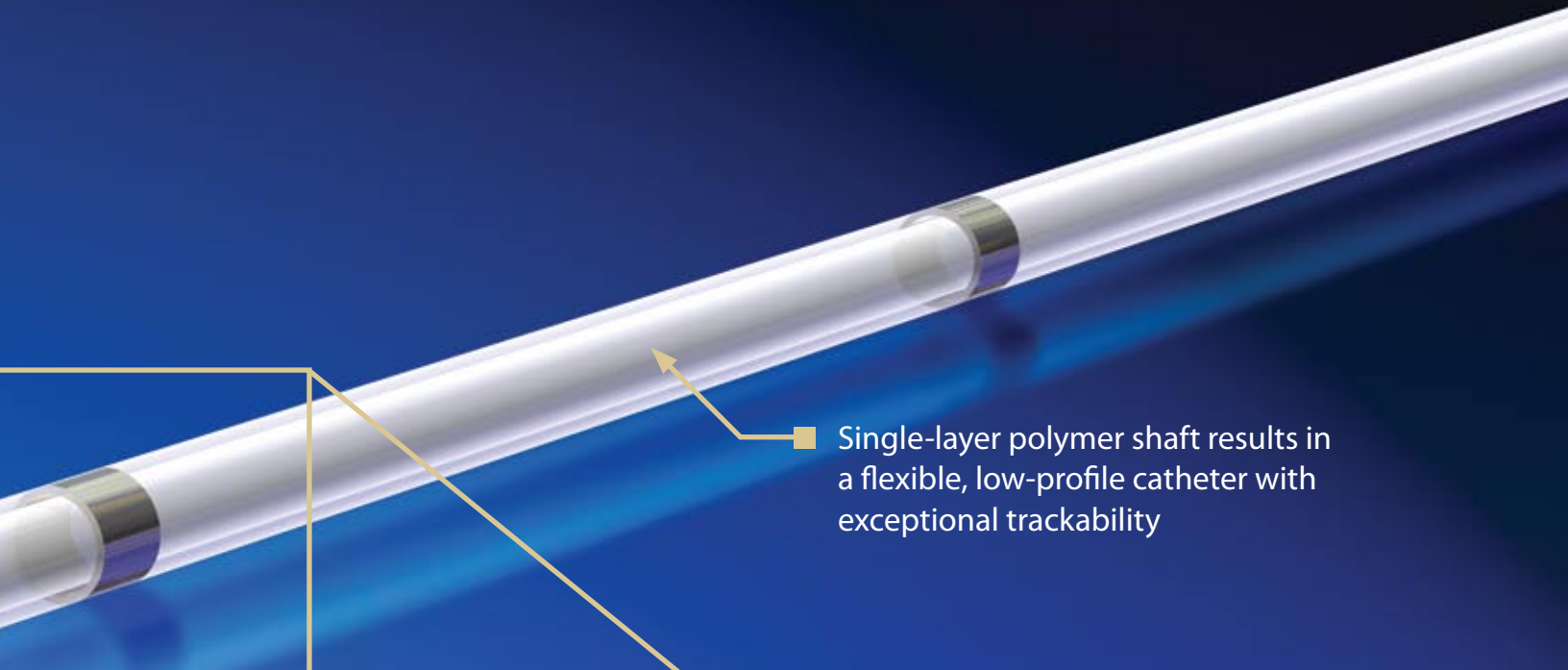
- Tapered distal tip and low crossing profile provide a smooth catheter-to-guidewire transition for navigating tortuous anatomy, accessing small vessels and crossing tight lesions



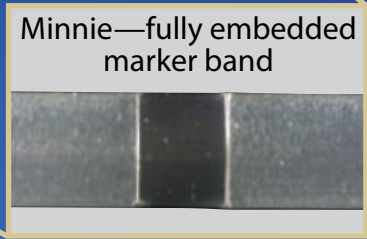
Minnie distal tip



superior guidewire support and exchange.

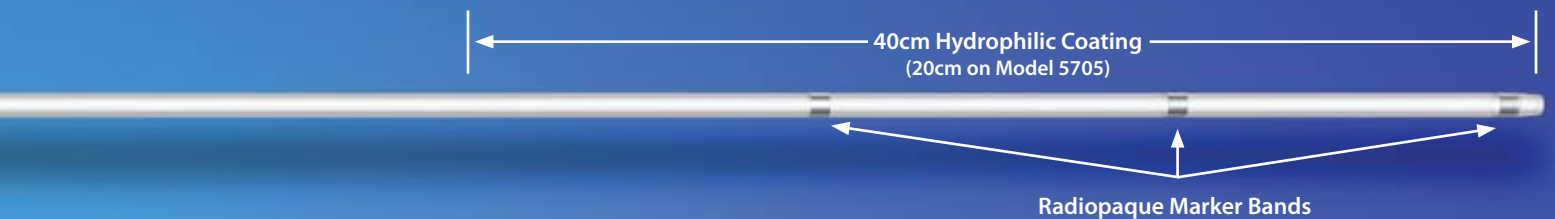


- Single-layer polymer shaft results in a flexible, low-profile catheter with exceptional trackability



- Three fully embedded platinum marker bands offer visibility for confirming device placement and assessing lesion length with seamless delivery

- Hydrophilic coating reduces sheath friction during deployment and facilitates smooth passage through small vessels



Minnie® Support Catheter

The Minnie support catheters are intended to be used in conjunction with steerable guidewires in order to access discreet regions of the arterial and/or coronary vasculature. They may be used to facilitate placement and exchange of guidewires and other interventional devices. The Minnie support catheters also may be used to subselectively infuse/deliver therapeutic agents.



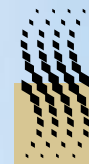
Minnie Support Catheter¹

Model	Maximum Guidewire Diameter	Length (cm)	Minimum Guide Catheter	Proximal Shaft		Distal Shaft		Distal Tip		Radiopaque Marker Spacing (mm)	Saline Flow Rate at 300 psi ²	Contrast Flow Rate ² at 300 psi ³
				I.D.	O.D.	I.D.	O.D.	I.D.	O.D.			
5709	0.014"	90	5F	0.017" 0.43mm	0.039" 0.99mm	0.016" 0.41mm	0.026" 0.66mm	0.015" 0.38mm	0.020" 0.51mm	15	1.3	0.6
5700	0.014"	135	5F	0.017" 0.43mm	0.039" 0.99mm	0.016" 0.41mm	0.026" 0.66mm	0.015" 0.38mm	0.020" 0.51mm	15	1.3	0.6
5701	0.014"	150	5F	0.017" 0.43mm	0.039" 0.99mm	0.016" 0.41mm	0.026" 0.66mm	0.015" 0.38mm	0.020" 0.51mm	15	1.3	0.6
5702	0.018"	90	6F	0.021" 0.53mm	0.044" 1.12mm	0.020" 0.51mm	0.030" 0.76mm	0.019" 0.48mm	0.023" 0.58mm	15	2.5	1.7
5703	0.018"	135	6F	0.021" 0.53mm	0.044" 1.12mm	0.020" 0.51mm	0.030" 0.76mm	0.019" 0.48mm	0.023" 0.58mm	15	2.2	1.4
5704	0.018"	150	6F	0.021" 0.53mm	0.044" 1.12mm	0.020" 0.51mm	0.030" 0.76mm	0.019" 0.48mm	0.023" 0.58mm	15	2.1	1.3
5705	0.035"	65	6F	0.038" 0.97mm	0.063" 1.60mm	0.037" 0.94mm	0.050" 1.27mm	0.036" 0.91mm	0.041" 1.04mm	50	11.3	8.6
5706	0.035"	90	6F	0.038" 0.97mm	0.063" 1.60mm	0.037" 0.94mm	0.050" 1.27mm	0.036" 0.91mm	0.041" 1.04mm	50	10.2	7.5
5707	0.035"	135	6F	0.038" 0.97mm	0.063" 1.60mm	0.037" 0.94mm	0.050" 1.27mm	0.036" 0.91mm	0.041" 1.04mm	50	8.6	6.8
5708	0.035"	150	6F	0.038" 0.97mm	0.063" 1.60mm	0.037" 0.94mm	0.050" 1.27mm	0.036" 0.91mm	0.041" 1.04mm	50	8.2	6.7

¹Packaged in quantities of 1 unit per box.

²Flow rates achieved at 4.3cP. Actual results may vary.

³Maximum pressure rating.



vascular
SOLUTIONS

Vascular Solutions, Inc.
6464 Sycamore Court
Minneapolis, Minnesota 55369 USA

Customer Service:
United States: 888.240.6001
International: (001) 763.656.4298
customerservice@vascularsolutions.com



0344

www.vascularsolutions.com

Please see the Instructions for Use for a complete listing of the indications, contraindications, warnings and precautions.
CAUTION: Federal Law (U.S.A.) restricts this device to sale by or on the order of a physician.
U.S. and International patents pending.
Minnie Support Catheter is a registered trademark of Vascular Solutions, Inc.
©2009 Vascular Solutions, Inc. All rights reserved.
ML1919 Rev. D 12/09