

The **EXPRO Elite™** Snare

Extending
your reach



Completely integrated 0.035" profile

- Permits delivery through 0.035" lumens of conventional catheters, eliminating exchanges and saving procedure time

Helical loop design

- Combines the advantages of a lower profile with a longer reach than right angle loops

Highly torqueable shaft design

- Allows greater control and maneuverability to access distal targets

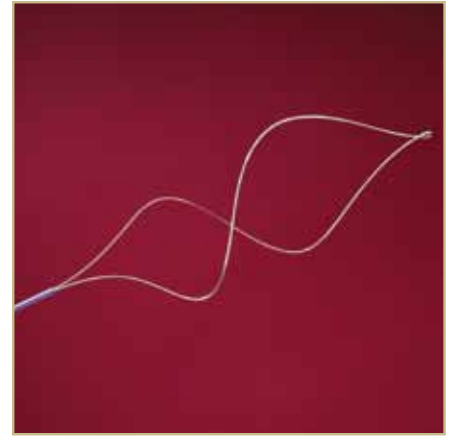
One-piece construction with no assembly required

- Provides durability and facilitates rapid deployment

Radiopaque loop

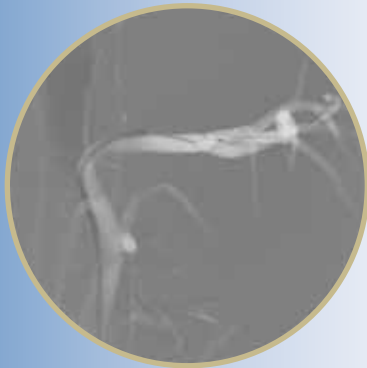
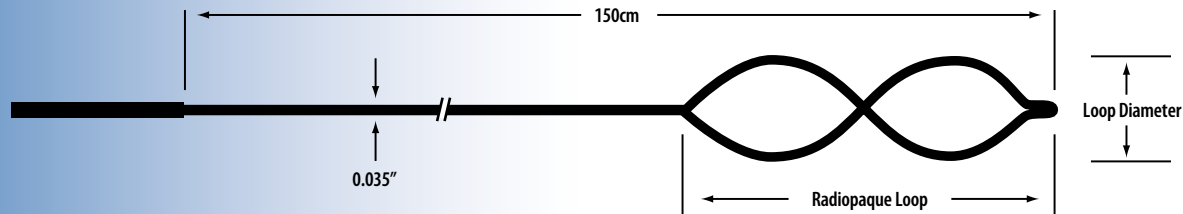
- Enhances visualization and identification of capture area and sheath location

The **EXPRO Elite™** Snare

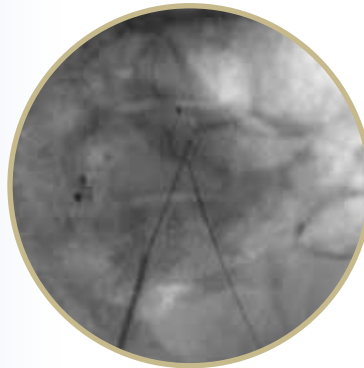


Model	Description	Loop Diameter	Box Quantity
8400	EXPRO Elite Snare	5mm	1
8401	EXPRO Elite Snare	10mm	1
8402	EXPRO Elite Snare	15mm	1
8403	EXPRO Elite Snare	25mm	1
8404	EXPRO Elite Snare	35mm	1

Specifications:



Deliver through ≥ 0.035 " lumen of conventional diagnostic or therapeutic catheter



Greater control and maneuverability for better access to distal targets



Enhanced visualization of the snare capture area

CAUTION: Federal law (U.S.A.) restricts this device to sale by or on the order of a physician.

The EXPRO Elite Snare is intended for use in the cardiovascular system and hollow viscous to retrieve and/or manipulate objects using minimally invasive surgical procedures. Manipulation procedures include retrieval and/or repositioning of intravascular foreign objects such as coils, balloons, catheters and/or guidewires within the cardiovascular system.

Please see the *Instructions for Use* for a complete listing of the indications, contraindications, warnings and precautions.

EXPRO Elite is a trademark of Vascular Solutions, Inc.

©2011 Vascular Solutions, Inc. All rights reserved.

ML1902 Rev. B 04/11



vascular
SOLUTIONS

Vascular Solutions, Inc.

6464 Sycamore Court

Minneapolis, Minnesota 55369

Customer Service: 888.240.6001

customerservice@vasc.com

www.vasc.com